



Qi Wooden Wireless Charger 10W With 2-10mm Charging Distance

Our Product Introduction

Basic Information

- Place of Origin: Guangdong, China
- Brand Name: Autige
- Certification: CE, ROHS, FCC-ID
- Model Number: AD-W01
- Minimum Order Quantity: 2PCS
- Price: \$6.50/pieces 1-999 pieces
- Packaging Details: Gift Box
- Delivery Time: 7-15days
- Payment Terms: T/T, Paypal, West Union, L/C
- Supply Ability: 3000pcs per day

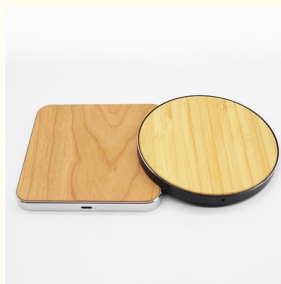


Product Specification

- Type: Electric
- Port: 1 X USB
- Use: Mobile Phone
- Product Name: Wooden Fast Wireless Charger
- Silver,black+Color: Silver,black+
- Material: Aluminum+Wood
- Output: 5.0V-1A/9V-1.1A
- Input: 5.0V-2A/9V-1.67A
- Standard: Qi Wireless Charging Standard
- Charging Distance: 2-10mm
- Charging Efficiency: 75%(Over 75%)
- Dimension: 10*10*0.9cm
- Highlight: Qi Wooden Wireless Charger,
Qi Wireless Charger 10W,
10mm Charging Distance Wireless Charger



More Images



for more products please visit us on autigetechnology.com

Product Description

10W Qi Wooden Wireless Charger With 2-10mm Charging Distance And 5.0V-1A/9V-1.1A Output

Production description

| | |
|-------------------|------------------|
| Material | Aluminum+Wood |
| IC | ST |
| Power | 10w |
| Input | 5.0V-2A/9V-1.67A |
| Output | 5.0V-1A/9V-1.1A |
| Standards | Qi |
| Charging Distance | 2-10mm |
| Conversion | 73% |
| Dimensions | 10*10*0.9cm |
| Net weight | 120g |
| Color | silver,black+ |

Description

1. 100% brand new and high quality.
2. Suitable for most of phones and tablets(Please make sure your device have wireless charging function).
3. With non-slip silicone for stable placement of your device.
4. Adopts smart identification system, just put down to charge.
5. Short-circuit protection of the receiver to avoid overcharge & overheating, security and reliable.

Detailed Images



Cherry Wood

Product Information



Case-Friendly

Keep your phone case on-just place and charge.



Suggest adapters







Company Information

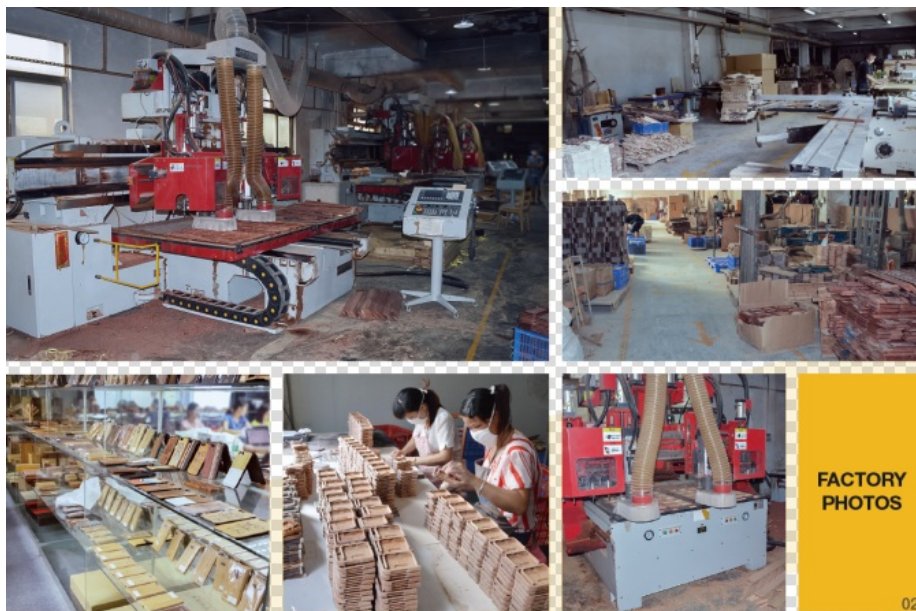
Company information

Our company is a comprehensive high-tech enterprise specialized in designing, producing and selling creative wood and bamboo technology products, and over 10 years' experience in bamboo and wooden industry. Our factory covers an area of 3,000 square meters, has advanced equipments, computer system, CNC machines, engraving machines and cutting machines.

We specialize in the production of bamboo and wooden cases for iPhones and Samsungs, Wooden Bluetooth speaker, Wooden sunglass, Wooden watch, Wooden phone holder, Wooden box, Wooden wireless charger, phone case etc. And each product will be 100% QC before shipment. Our company can work out a new product according to your idea, artwork or samples. OEM and OEM are welcome.

Packaging & Shipping

Factory



Transportation



FAQ

1. Can I get samples from you?
We are honored to offer you samples for quality check.
2. What parts are manufactured by you?
80% of parts are manufactured by us. Spare parts are from cooperative factory .
3. How long do I need to wait before my goods arrive?
3-5 days for international express. 5-7 days for air transportation, 35-40 days for sea transportation.
4. Can you put my brand name (logo) on these products?

A:Yes,or container order.Sticker order qty over 300pcs.

5. How many wireless charging receiving coil ? It's Qi standard ?

1 or 2 receiving coils .is Qi standard

6. What payment methods do you accept?

T/T,L/C,Western Union, Money Gram, Paypal,etc.

7. What is your product quality?

Our raw materials are purchased from qualified suppliers.And we have a strong quality control team to guarantee our quality.We always care what you care!!

8. What is your warranty?

Our warranty is 12 months after delivery.We always pay high attention to after sale service!!



Autige Shenzhen Autige Technology Co., Ltd.



+8613360087110



roger@autige.com



autigetechnology.com

3rd Floor, Building B, Zhaofeng Industrial Zone, No. 3 Hangkong Road, Hangcheng Street, Baoan District,
Shenzhen City,518126,China